

Quick Guide for Ambient Set Up

1. Setting up the Table

Note: if table was NOT provided or you have your own, skip to Section 2: **Setting Cassini Ambient and Computer**

Box contents

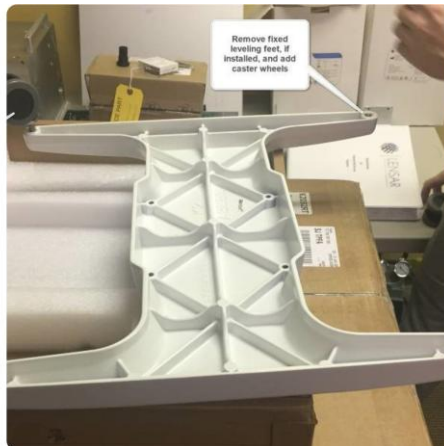
- Unpack the table column and set the accessories, table hardware and tools aside for later



- Table base may differ depending on the type ordered: small H-Base or wheelchair accessible base

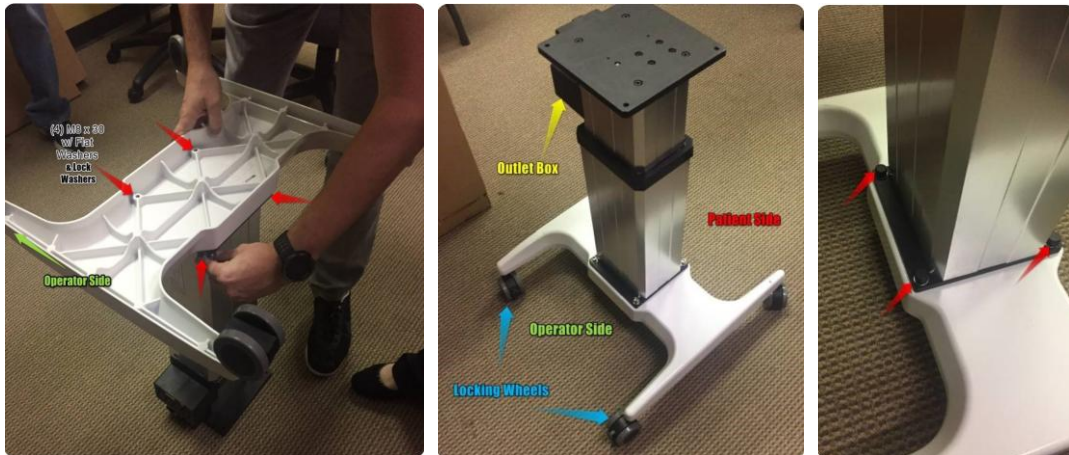
Installing the swivel casters (wheel)

- Unpack the table base
- Remove the four existing fixed feet from the column base (tools provided)
- Install the four swivel casters in the existing mounting holes
- Install the two locking style swivel casters on the operator's side of the table



Attaching the base of the table

- Align the table base and attach to the table column using M8 x 30 Allen screws w/o lock & flat washers
- Turn the table column right side up and verify if the column base is oriented correctly
- Place the plastic screw covers over each of the Table Base screws

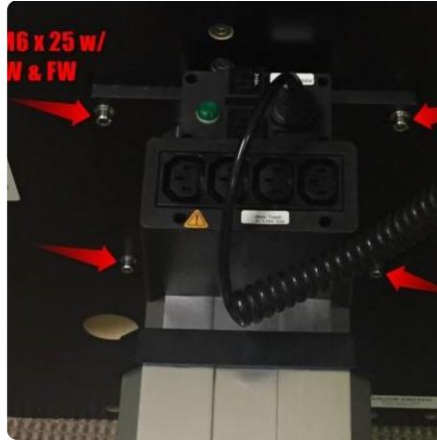
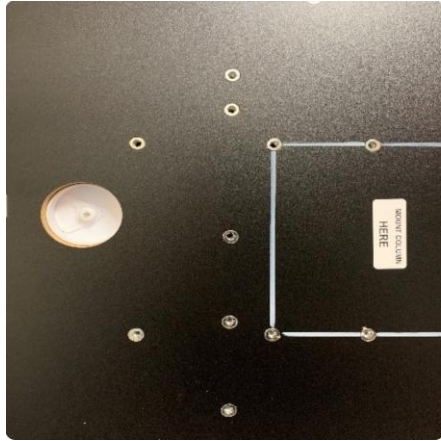


Installing strain relief, table top and switch

- Unpack the table top and mount it to the table column using M6 X 25 Allen screws w/o lock and flat washers
- Attach the AC power cable and strain relief clamp to the base of the K2 table and connect to the main power supply



- Mount the up/down switch assembly to the bottom of the table top using M6 x 40 w/o washer



- Position the switch towards the operator or on the side of the table (user preference for switch position)



Installing Up & Down switch

- Connect the Up/Down switch to the table



- Install wire tie mounts and tie-wrap the switch cable to the bottom of the table top



2. Setting up Cassini Ambient & Computer

Unboxing Cassini Ambient

Open the Cassini and accessory box to unpack. The accessory box should consist of the following:

- System Dust Cover
- x2 Power Cords (US standard, EU standard)
- Cassini Power Supply
- Lens Tissue
- Cassini User Manual/Instruction for Use
- Calibration Target

Unpacking and setting up Cassini Ambient

- Remove the top cardboard and foam cover from the Cassini Topographer
- Carefully lift the Cassini out of the box using the patient handles and straps at the back of the Cassini and place it on the K2 Table
- Remove the Cassini from the foam base and place it on the left front edge (patient side) of the table top. Then, remove the plastic bag

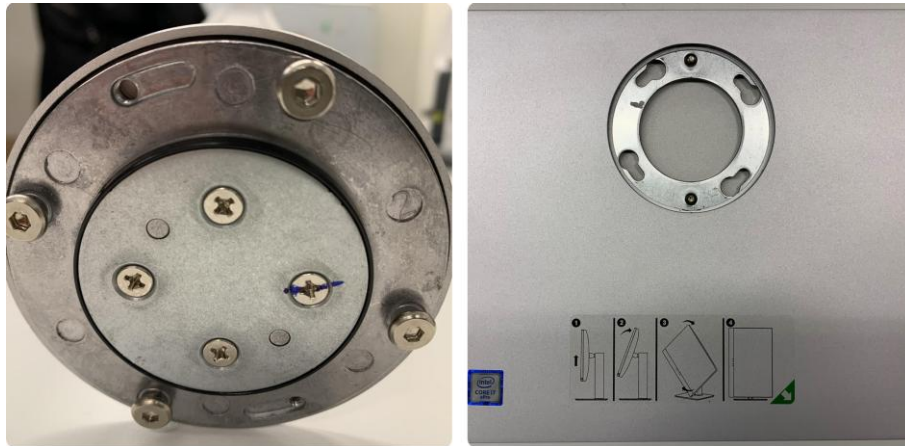


Computer/HP Unboxing

- Unpack the HP, keyboard and mouse

HP base assembly

- Unpack the HP stand and baseplate

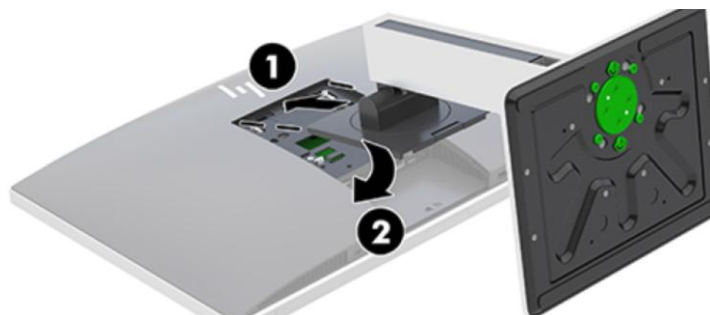


- Lock the HP stand and baseplate into place and tighten screws



HP stand assembly

- Place the computer face down on a soft flat surface. Set down the protective cover you removed to protect the bezel and screen surface from scratches or other damage
- Engage the hooks in the top of the stand in the two large holes in the upper part of the back of the computer (1)
- Lower the stand onto the computer and press down until it clicks into place (2)
- Place the HP on the right side of table facing the operator

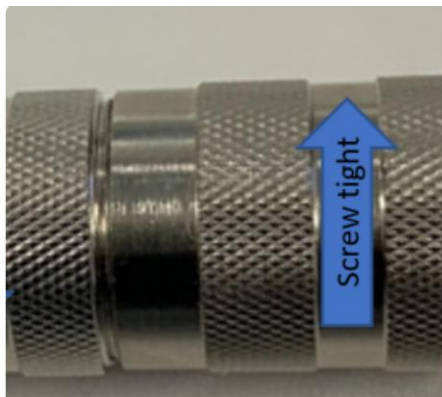


Setting up HP

- Connect the USB cable to the Keyboard and to the HP
- Connect the USB cable to the Mouse and to the HP
- Connect an AC Power Cable to the back of the HP
- The K2 table has two sockets for the cables to go through: left socket for USB cable from Cassini Ambient, right socket for AC & HP cables
- Secure everything with tie wraps



- Connect the DC Power Supply to the Cassini power cable



- Connect the AC Power Cable to the input of the DC Power Supply “brick”, use the shortest cable
- Use double-sided tape to secure the brick under the table (the power supply or cables should not get in the way of the technician or patient). Once could also use tie wraps



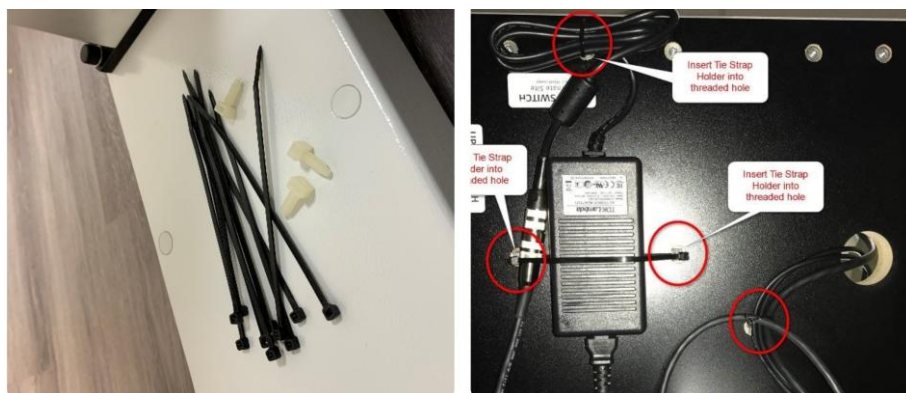
3. Powering up Cassini Ambient & Computer

Cassini Ambient wiring

- The power cable from the DC power supply should be connected to the adapter and then to the AC outlet on the up/down switch



- Attach the tie strap holders to the threaded holes underneath the table and tie-wrap the DC power supply to the bottom of the table near the operator side



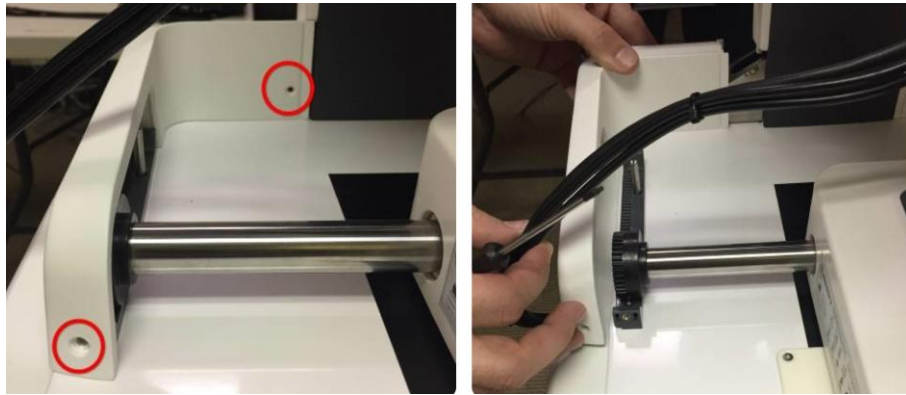
Cassini Ambient alignment

Note: The DC Power Supply should be positioned that the operator can easily access the power cable as there is NO strain relief and it can easily back out of the connector.

- Misalignment in rollers affects the scan results. Move the Cassini all the way forward and backward to ensure that both rollers hit their mechanical forward and rear stops at the same time - if not, adjust as shown



- With the Cassini in the full back position, remove the two screws which secure the roller cover then remove the cover

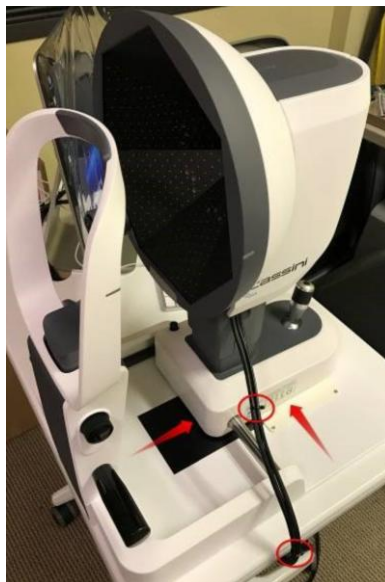


- Move the roller back until it hits the mechanical stop. Realign the uncovered roller by gently lifting the device and placing it in the correct tooth so that both rollers are in contact with the stop



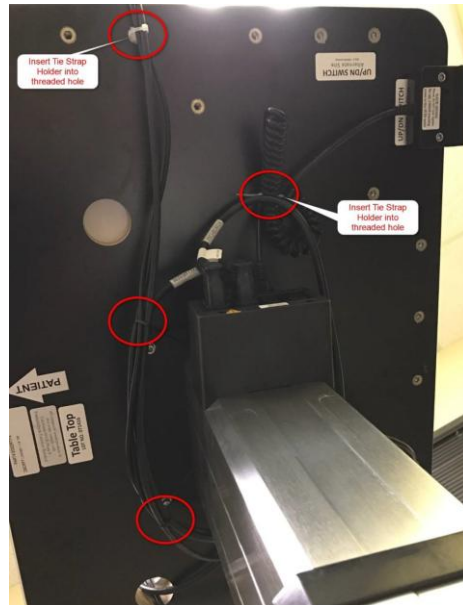
Adjusting the tie wraps

- Move the Cassini to the far back and most right position
- Add (2) tie straps to the approximate circled locations. Make sure there is slack in the cable and route it under the table



- Route power and USB cables, as shown, under the table

- Add tie straps to the approximate circled locations and secure to tie strap mounts as shown
- Do not tighten the straps firmly to allow for some movement



Powering on Cassini Ambient

- Connect the power cord to an AC receptacle. The Cassini should momentarily turn on all LEDs



- Turn on the HP using the power button on the bottom of the monitor



- Proceed to perform the Laser Alignment Calibration (LAC) and then a color calibration, which is required on all new installs or whenever a Cassini topographer is moved.
- Contact Cassini Technical Support for any assistance